

Pictures to Stitches

Auto Digitizing



Setting up File

- Select New Blank Design.
- Select Insert Artwork.
- Navigate to C: Users> Public> Public Pictures> BERNINA 9 Pictures> Artwork> WMF.
- Select Decorative Daisy.wmf. Open the file.

Auto Digitizing



- In the Auto-Digitize Toolbox, select Auto-Digitize.
- Click OK in the Bitmap Artwork Preparation.
- In the Auto-Digitize dialog box, click on Add Thread Chart Colors to Palette.
- Click on Select Thread Charts.
- Select Wonderfil Polyfast on the left.
- Click on the single right arrow to add it to your charts.
- Click OK.
- From the Details drop-down choices in the Auto Digitize dialog box, select Satin Line.
- Click on the drop-down by the white color chip and select Omit.
- Click OK.



Editing the Design: Creator-Level

- Deselect the design.
- In Color Film, right click on the picture in Color Film and select Lock.
- Select all the flower petals in Color Film while holding the Ctrl key.
- Right click on the Fancy Fill icon in the Stitch Toolbar.
- The default Fancy Fill is added; but this can be changed in Object Properties.
- Click OK.
- Select File> Save As and name the file Auto Digitizing.



Additional Editing in DesignerPlus

- Deselect.
- Hold the Ctrl key and select all the step fills in the design.
- Select Effects.
- Click on the Gradient Fill tab.
- Place a check mark in front of Gradient Fill.
- Select Profile 2.
- Click OK.



Notes:



When you have two or more thread charts selected, the software will pick the best thread match to the bitmap color from any of the selected chart.

Satin Line will add a narrow satin line around the objects in the artwork.



Magic Wand



Setting Up File

- Select New Blank Design. Select Insert Artwork.
- Navigate to Libraries> Pictures> BERNINA 9 Pictures> Artwork> WMF. Open Pinwheel Star.



Preparing the Bitmap

- With the picture selected, click on Prepare Bitmap.
- Hold the Ctrl key and select the two lavender squares in the dialog box; click on Merge.
- Repeat for the two green objects; the red and coral objects; and the mustard and brighter yellow objects. You should have a total of 10 colors after merging the objects. Click OK.



Magic Wand

- Select Magic Wand in the Auto-Digitize Toolbox.
- Work from background to foreground for proper dimension.
- Skip the light yellow ring in the background. With Magic Wand, you can choose to omit certain parts of the artwork.
- First click on the gold areas in between the triangles of the pinwheel. A step fill is added by default.
- Right click on Pattern Fill in the Stitch Toolbar. Click on Select.
- In the Heirloom Pattern set, select # 738.
- Click OK; then OK again.
- Click on each of the triangles of the pinwheel. To decrease color changes, click on the same color triangles before moving to the next color.
- Select the Satin Fill in the Stitch Toolbar.
- Click on the light blue and then the dark blue areas of the picture.
- Press Esc.



Editing

- Select all the Pattern Fill objects in Color Film while holding the Ctrl key.
- Open Object Properties.
 - ◆ Change the Size X and Column Spacing to .24”.
 - ◆ Change the Size Y and the Row Spacing to .106. Click OK.
- While they are all selected, click on Outlines and Offsets.
- Check Object Outlines; uncheck Offset Outlines.
- Select single for the Type and select Color 60 for the color.
- Press OK.

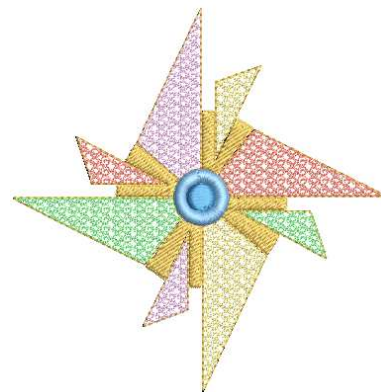


Adding Stitch Angles

- Select the light blue satin stitch ring.
- In the Edit Toolbox, select Add Stitch Angles.
- Create four sets of two left clicks at 12:00, 3:00, 6:00, and 9:00.
- Press Enter; then Esc.
- Save the file as Magic Wand Pinwheel.

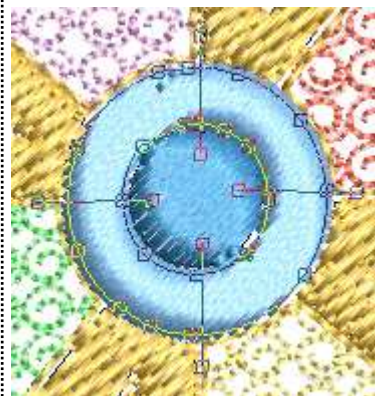
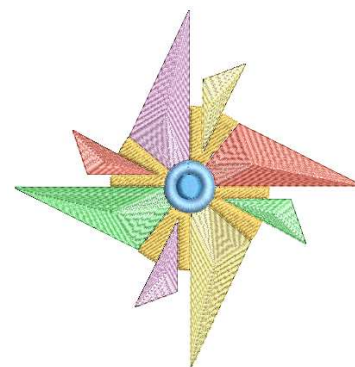


Notes:



When merging objects, the software chooses the color that has the largest area in the artwork.

DesignerPlus gives you more choices when deciding on fills to use with Magic Wand. Shown is the Ripple Fill.



Magic Wand: Fill Without Holes



Setting Up File

- Select New Blank Design.
- Select Insert Artwork.
- Navigate to Libraries> Pictures> BERNINA 9 Pictures> Artwork> WMF. Open Flower Pattern.wmf.



Processing Picture

- Select Magic Wand Fill Without Holes in the Auto Digitize Toolbox.
- Click on the Picture.
- Click OK in the Bitmap Artwork Preparation dialog box.
- Click on the flower petal to the right of the center petal; then on the left petal; then on the center petal.
- Press Esc.
- Select the picture in Color Film, press Delete.

Mirror Merge



- Select the gold petals in Color Film.
- In the Mirror Merge Toolbox, select Wreath.
- Change the Number of Copies to 5 in the floating dialog box and click when the petals are arranged like the picture at the right. Keep an eye on the center of the design and when it forms a nice circle, click to set.



- Select Ctrl + A.
- While the design is selected, click on the Backstitch in the Stitch Toolbar.

Editing in Creator



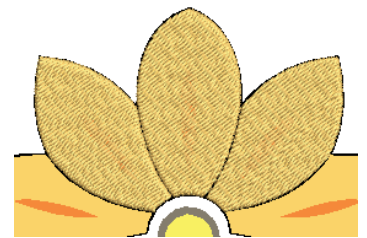
- Press the T on the keyboard to change to Design View. Notice all the jump stitches.
- Select Ctrl + A.
- In the Edit Toolbox, click on Branching.
- Press Enter two times to eliminate the jump stitches.
- Select File> Save as.
- Name the file Magic Wand Fill without Holes.

DesignerPlus Addition: Blackwork Run

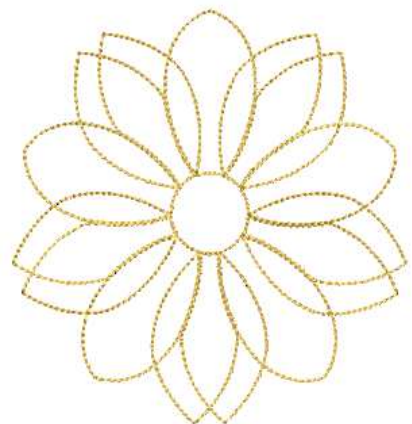
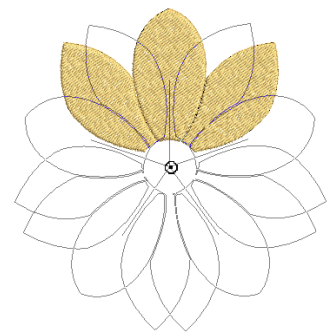


- Press the T on the keyboard to change to Design View. Notice all the jump stitches.
- Select Ctrl + A.
- In the Edit Toolbox, click on Blackwork Run.
- Press Enter.

Notes:



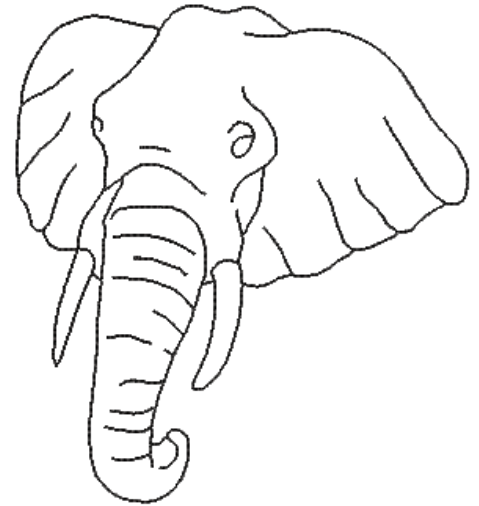
You can also select Prepare Bitmap before using this tool.



With DesignerPlus software, an additional option is available. Blackwork Run will eliminate the jump stitches in outline designs with one click.

Magic Wand: Centerline

Notes:



Setting Up File



- Select New Blank Design.



- Select Insert Artwork.

- Navigate to Libraries> Pictures> BERNINA 9 Pictures> Artwork> 04_Centerline-Outline.

- Open Elephant.bmp.



- Make sure Proportional Scaling is locked.
- Increase the size of the design to 150% in the Transform Toolbar.
- Press Enter.

Processing Picture



- Select Prepare Bitmap in the Auto Digitize Toolbox.
- Click OK in the Bitmap Artwork Preparation dialog box.



- Zoom in on the picture.
- Select Magic Wand Centerline in the Auto Digitize Toolbox.
- Click on the black outline around the elephant.
- Any parts of the design that are not connected to the main outline will also need stitches added.
- Click on the eye that doesn't connect to the elephant.
- Click on the accent lines that don't connect. There are a total of four accent lines. Zoom in as needed.



- To check, you can hide the picture by clicking on Show Bitmap.
- If you need to add more lines, bring the picture back by clicking on Show Bitmap and click on the missing lines.

- When you are finished, press Esc.



- Select the stitches in Color Film.
- Click on Triple Outline in the Stitch and Color Toolbar.
- Select File> Save As.
- Name the file Magic Wand Centerline.

Magic Wand: Block Digitizing



Setting Up File

- Select New Blank Design.
- Select Insert Artwork.
- Navigate to Libraries> Pictures> BERNINA 9 Pictures> Artwork> 04_Centerline-Outline.
- Open Floral Pattern 3.bmp.



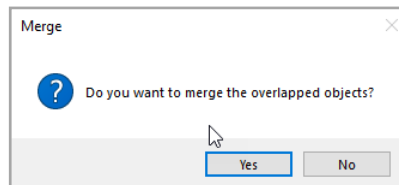
Processing Picture

- Select Magic Wand Block Digitizing in the Auto Digitize Toolbox.
- Click on the Picture.
- Click OK in the Bitmap Artwork Preparation dialog box.
- Click on the leaf shape that is shown in the picture to generate stitches.
- Press Esc.
- Select the picture in Color Film; press Delete.

Wreath



- Select the shape.
- In the Mirror-Merge Toolbox, select Wreath.
- Change the number of wreaths to 16.
- Move the shapes on the design screen until you see something you like.
- Click on the screen to generate stitches.
- Select No if you are prompted to merge the design.
- Select Ctrl + A.
- Click on Branching in the Edit Toolbox and press Enter twice.



Add a Flower Center

- Select the Ellipse tool in the Digitize Toolbox.
- Select a contrasting color.
- Click in the center of the flower; then drag to create the desired circle size. Click and press Enter.
- Press Esc.
- Select the petals in Color Film and right click and Group.
- Select Ctrl + A.
- Click on Align Centers in the Arrange Toolbox.
- Name the file Magic Wand Block Digitized Flower.

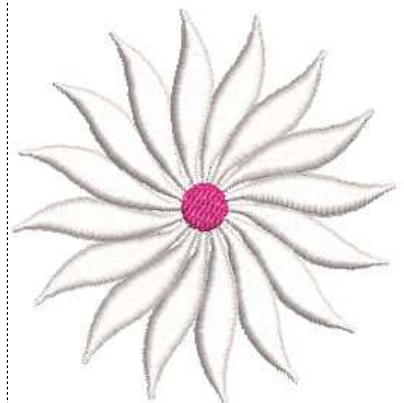
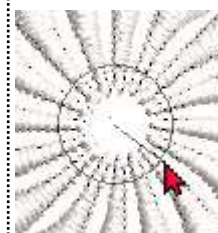
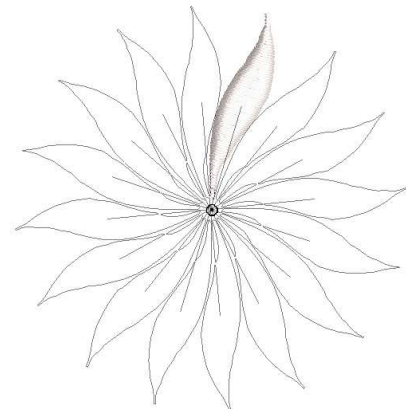
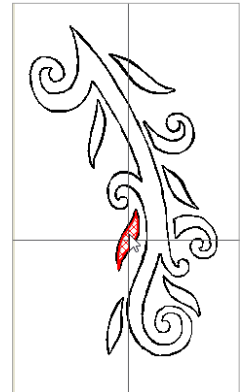


Remove Overlaps

- Remove Overlaps is grayed-out because Branching was applied to the flower petals.
- If Branching is applied to the petals after overlaps are removed, travel stitches appear on top of the flower.

Notes:

Block digitizing is good for artwork that has small areas that curve. Stitches will be added that have multiple angles that conform to the shape of the artwork.



PhotoSnap

Setting Up File



- Select New Blank Design.
- Select Insert Artwork.



- Navigate to Libraries> Pictures> BERNINA 9 Pictures> Artwork> WMF.
- Open Cabin.png.

Processing Picture



- Select the picture.
- Click on Adjust Bitmap.
- Move the Brightness control to the left three clicks.
- Click OK.



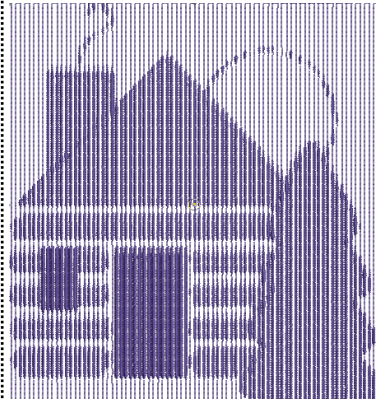
- Select PhotoSnap in the Auto-Digitize Toolbox.
- Double click on the design to open Object Properties.

Editing the Design



- In the PhotoSnap tab, choose Fine for Resolution.
- For Fill Angle, select 90 degrees.
- Click OK.
- Click on Show Bitmap to hide the bitmap.
- Save the design as PhotoSnap cabin.

Notes:



Color PhotoStitch

Setting Up File



- Select New Blank Design.
- Select Insert Artwork.



- Navigate to Libraries> Pictures> BERNINA 9 Pictures> Artwork> 05_PhotoStitch.
- Select Mountain Scene. Open the file.

Adding Color PhotoStitch



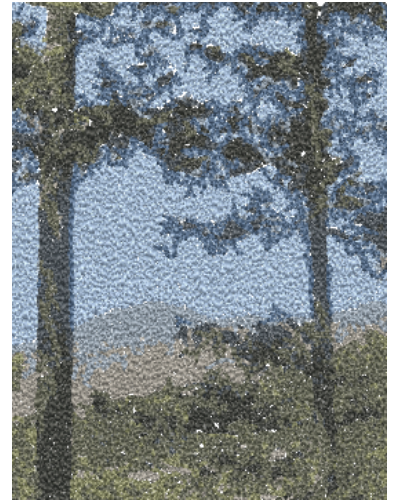
- With the picture selected, click on Color PhotoStitch in the Auto-Digitize Toolbox.
- Change the Resolution to High.
- Click on Adjust.
- Change the Brightness to about 1.5.
- Click OK.
- Increase the number of colors to 8.
- Click OK.

Hiding the Picture



- Select Show Bitmap to hide the picture.
- Select File> Save As and name the file, Color PhotoStitch Mountain.

Notes:



Changing the Resolution will increase the amount of detail and add to the stitch count.